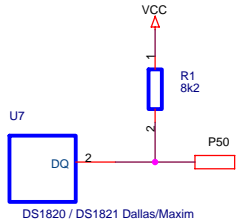
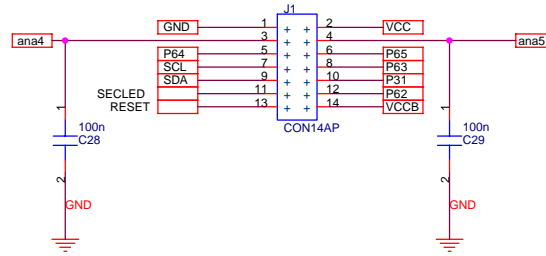


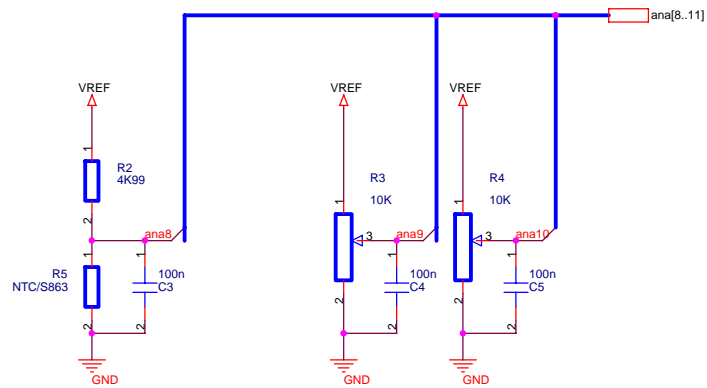
Temperatursensor (1bit-Bus)



Boarderweiterung



ADU - Einheit

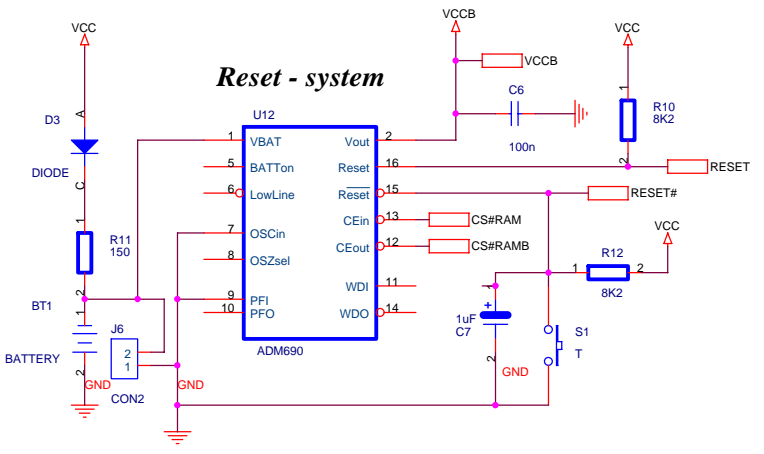
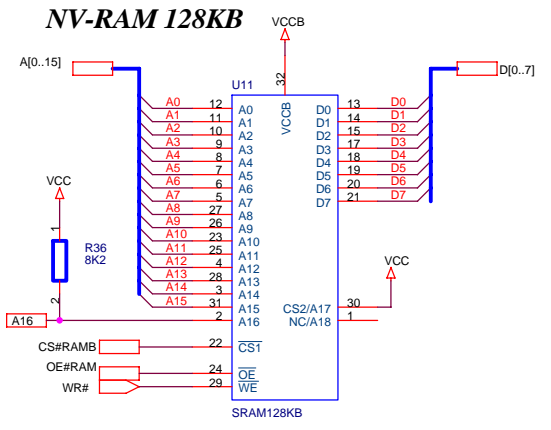
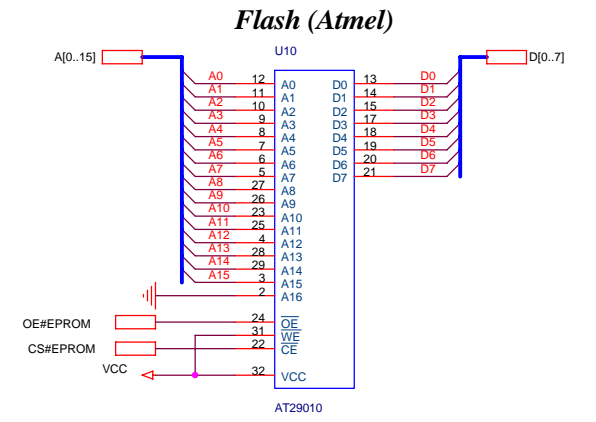
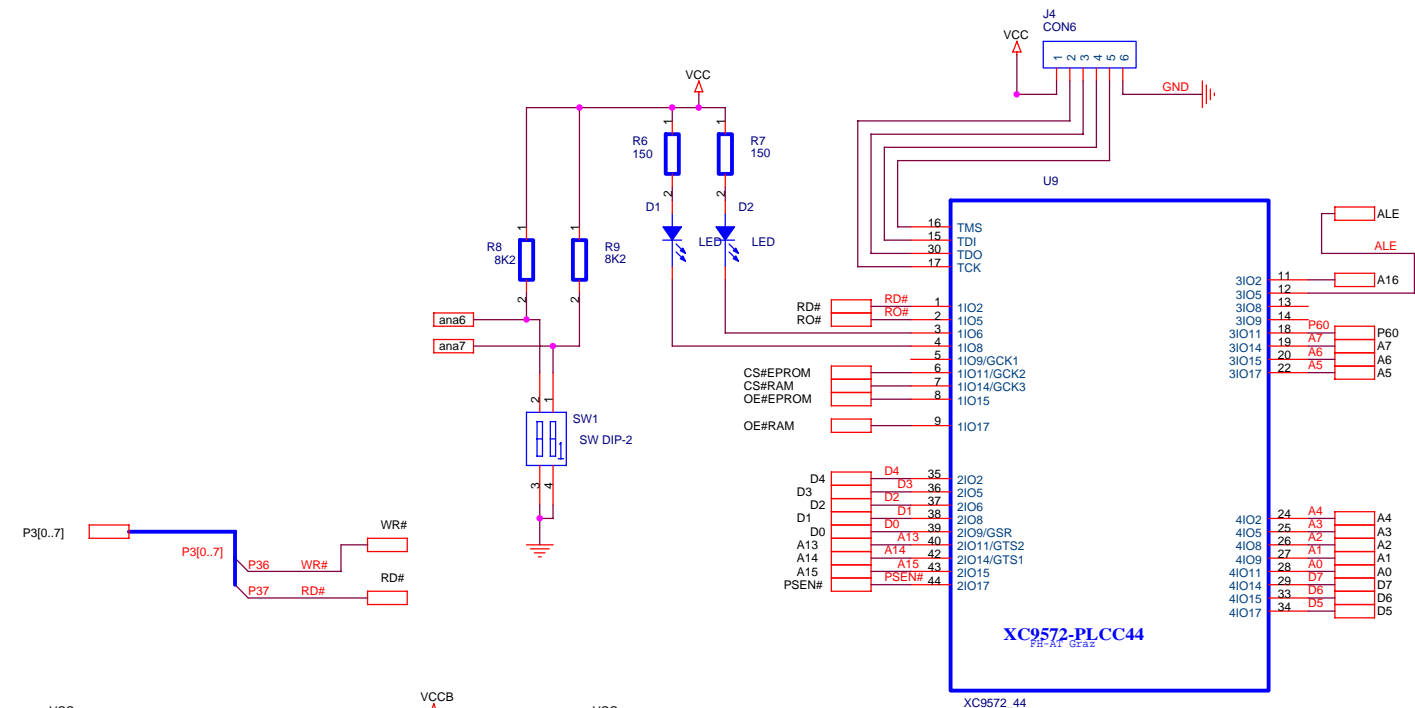


NTC-Temperatursensor

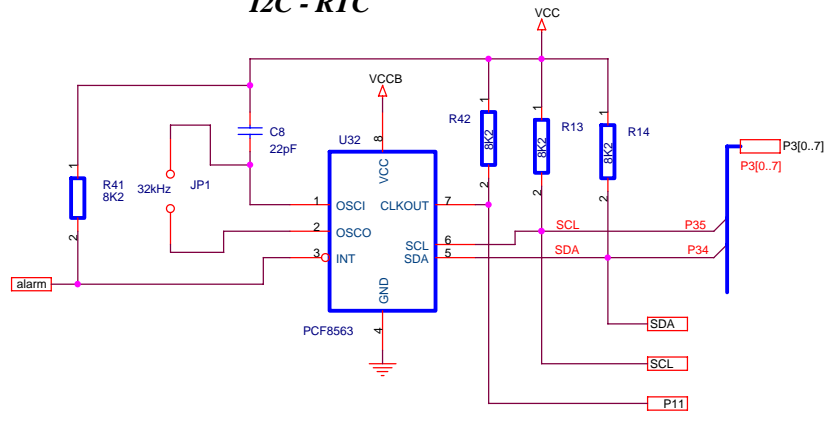
Potentiometer

P6.6 + P7.7	7-Segm und LED-B
P5.1 bis P5.7	LCD
P7.3	Tastaturdecoder - D
P7.2	Tastaturdecoder - C
P7.1	Tastaturdecoder - B
P7.0	Tastaturdecoder - A
P7.6	Anwenderprogramm
P7.0	System intern
P1.0	INT3 Drehimp. B
P1.1	INT4 RTC
P1.2	INT5 10Hz
P1.3	INT6 (Enter) pos. Flanke
P1.4	INT2 Drehimp. A
P1.5	DIN AS1100
P1.6	LOAD AS1100
P1.7	T2 Licht Frequenz Umsetzer
P3.0+1	Serielle Schnittstelle
P3.2	INT0 TASTATUR
P3.3	INT1 SEKUNDENTAKT
P3.4	T0 P34 SDA
P3.5	T1 P35 SCL
P5.0	1 bit - Bus Temperatursensor
POTI R4	Kanal 10
POTI R3	Kanal 9
NTC R8	Kanal 8
www.humerboard.at	

Title		sb8v2006	
Size	A3	Document Number	CAMPUS02 / Dr. Humer
Date:	Saturday, October 22, 2005	Sheet	1 of 5
			Rev 1.0



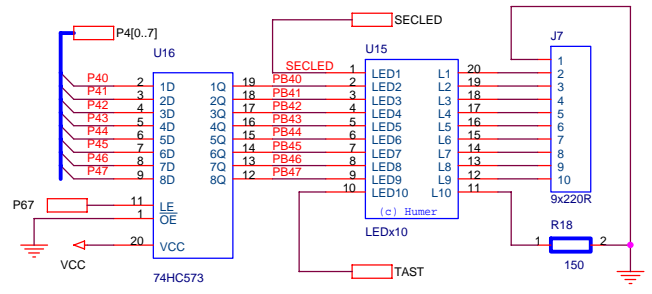
I2C - RTC



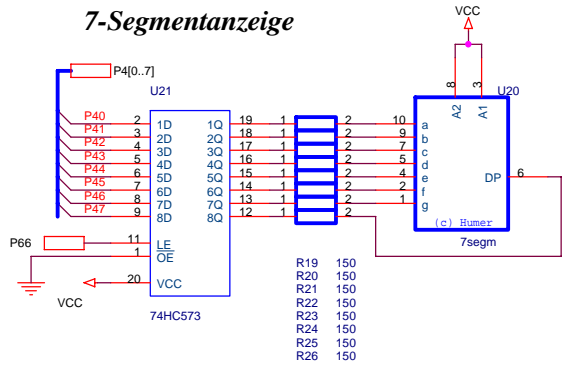
**Lötjumper, on = no ACCU
D3 dann nicht bestückt**

Title		
sb8v2006		
Size	Document Number	Rev
A3	CAMPUS02 / Dr. Humer	1.0
Date:	Saturday, October 22, 2005	Sheet 2 of 5

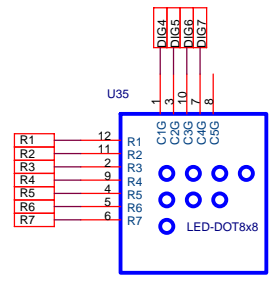
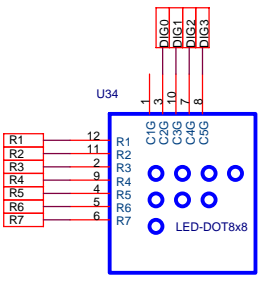
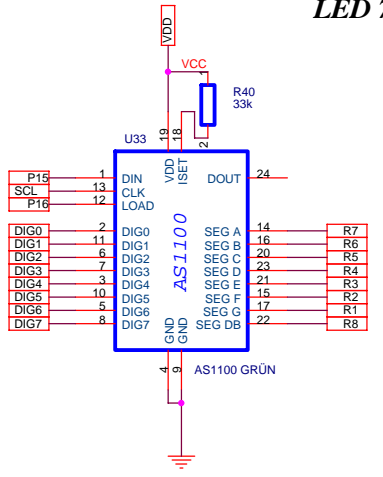
LED Balkenanzeige



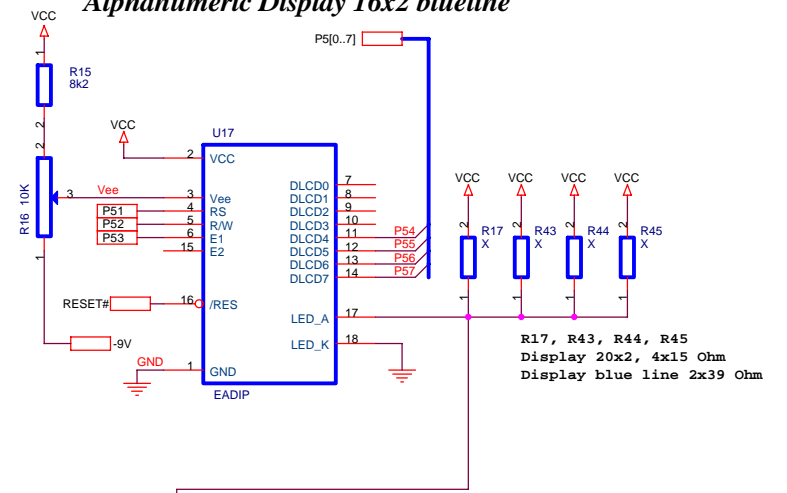
7-Segmentanzeige



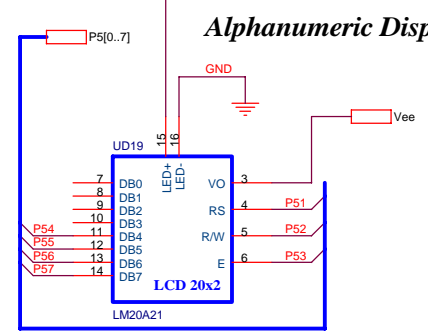
LED 7x8 Graphikdisplay



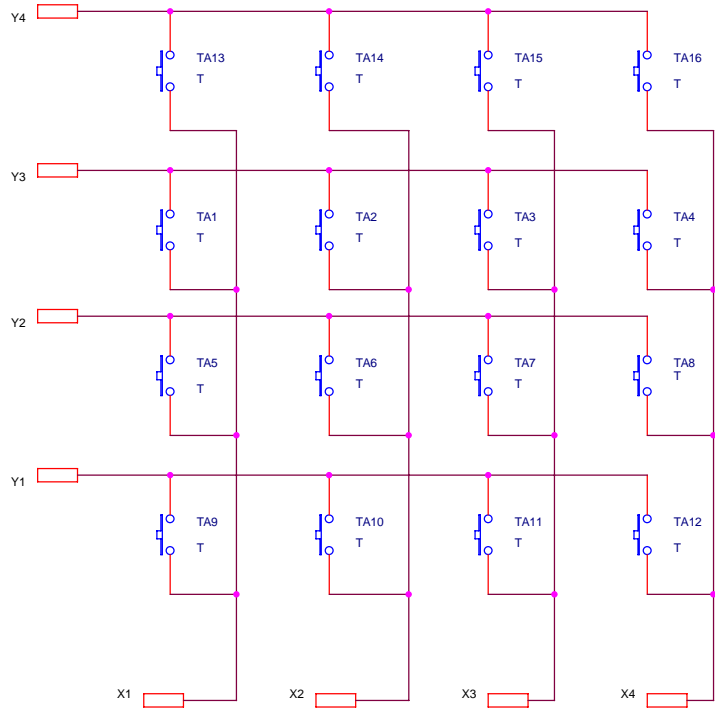
Alphanumeric Display 16x2 blue line



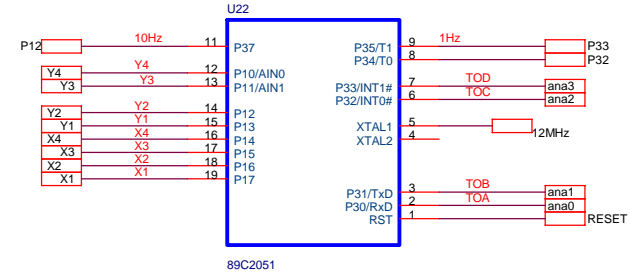
Alphanumeric Display 20x2



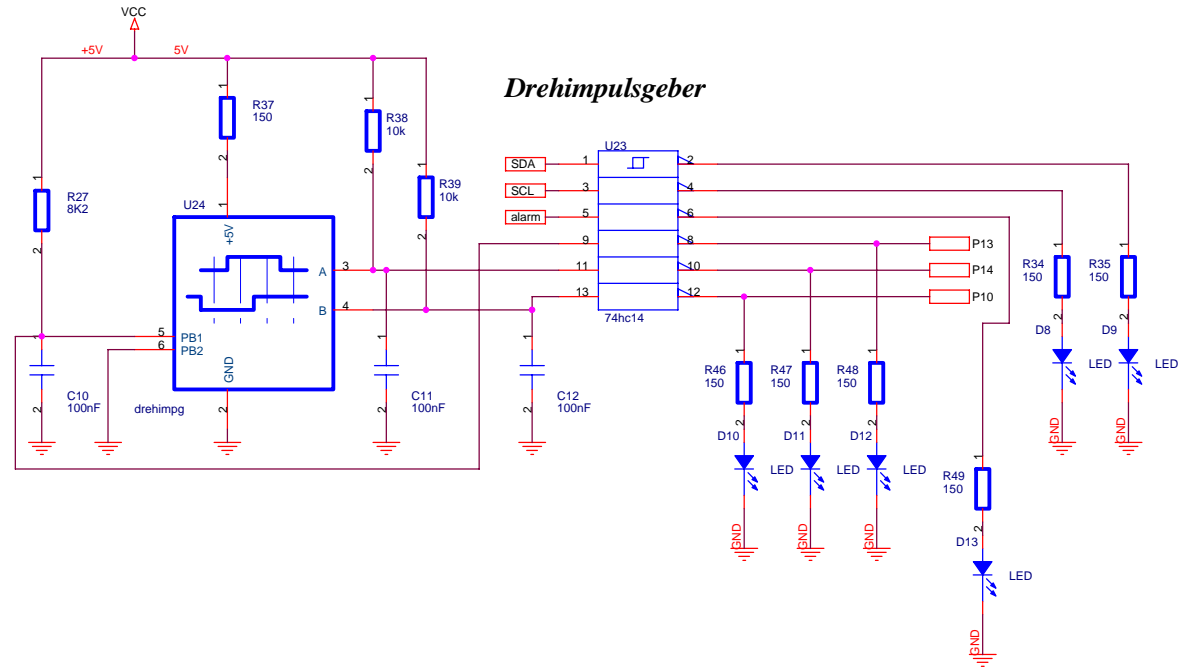
Tastaturmatrix



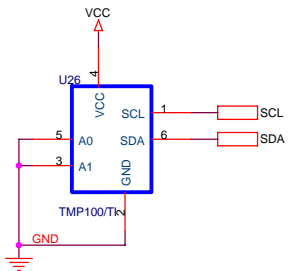
Tastaturdecoder



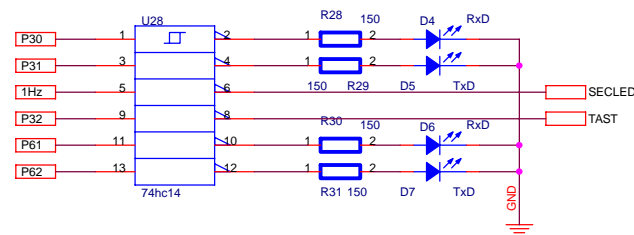
Drehimpulsgeber



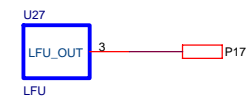
I2C-Tempersensor



COM Visualisierungseinheit

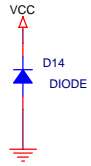
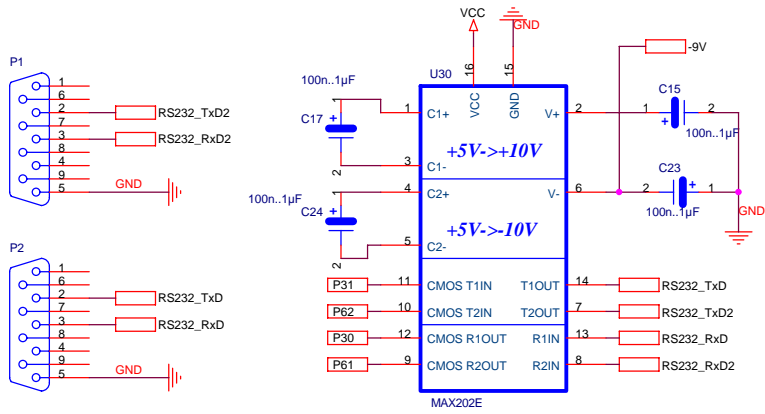


Licht-Frequenzumsetzer

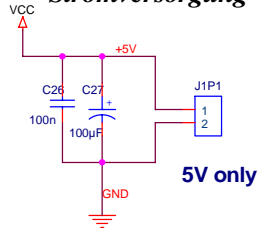


Title		
sb8v2006		
Size	Document Number	Rev
A3	CAMPUS02 / Dr. Humer	1.0
Date:	Saturday, October 22, 2005	Sheet 4 of 5

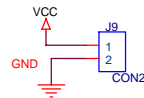
RS232 Einheit



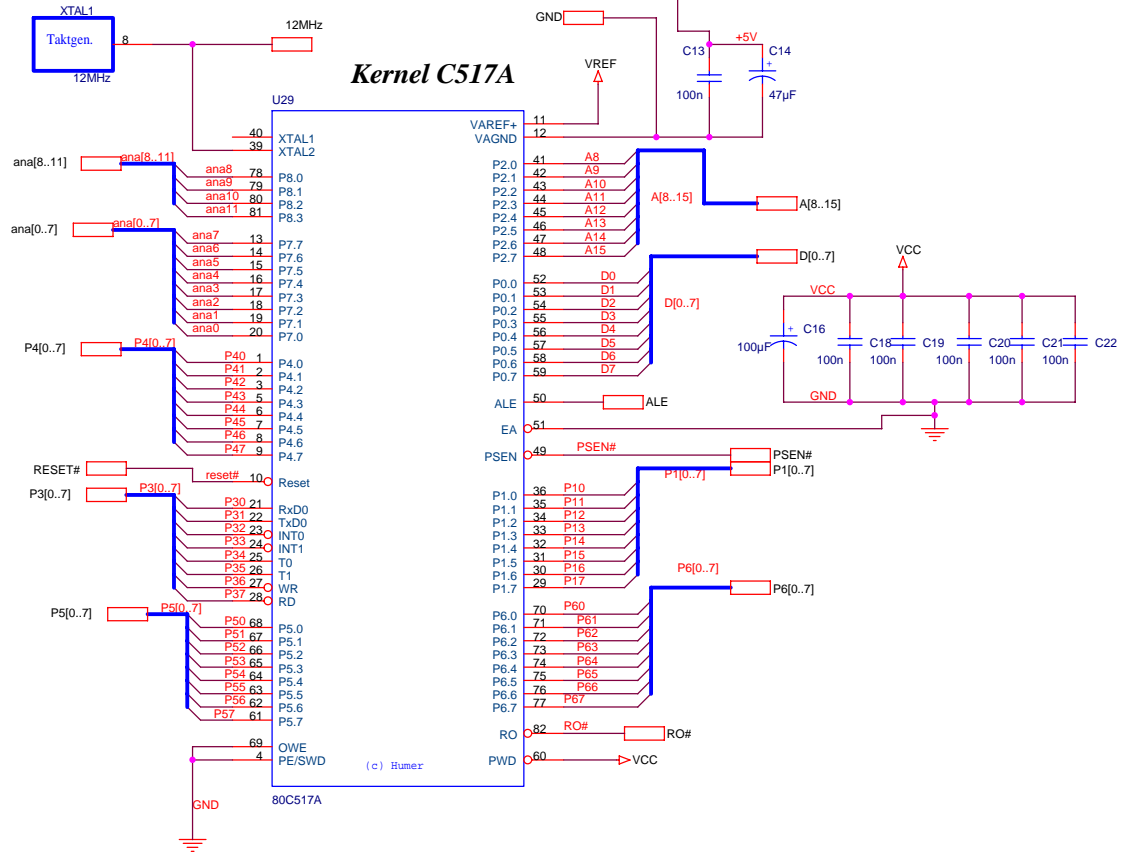
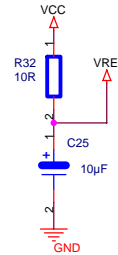
Stromversorgung



5V Connector



Spannungsversorgung ADU



Title		
sb8v2006		
Size	Document Number	Rev
A3	CAMPUS02 / Dr. Humer	1.0
Date:	Saturday, October 22, 2005	Sheet 5 of 5