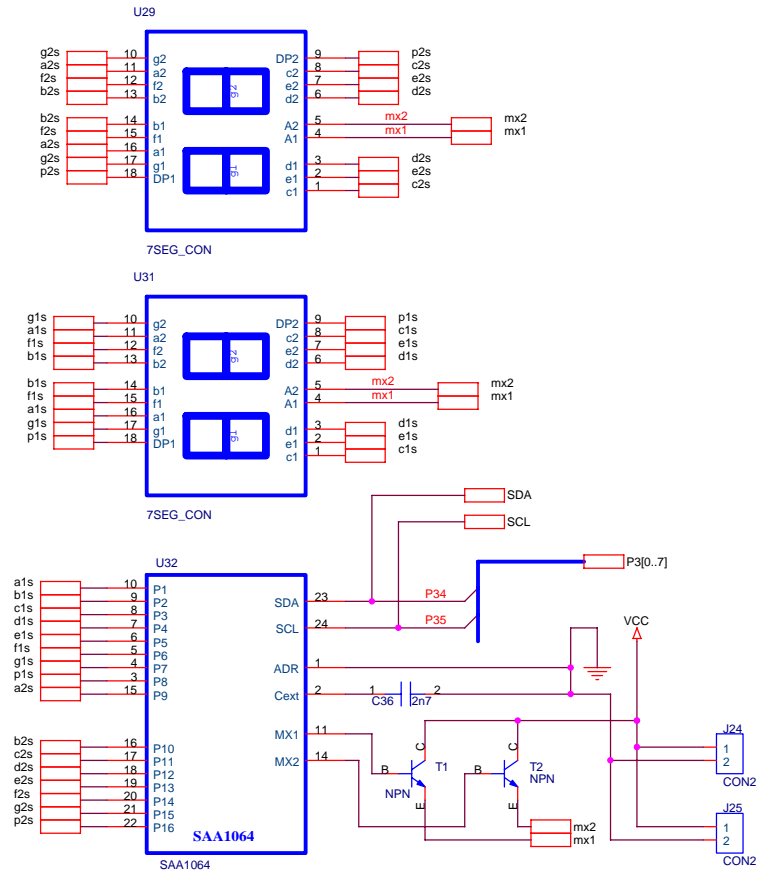
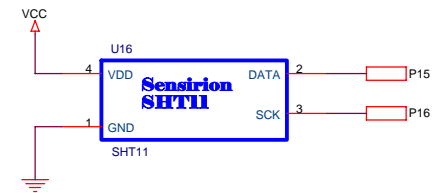


## I2C - Display

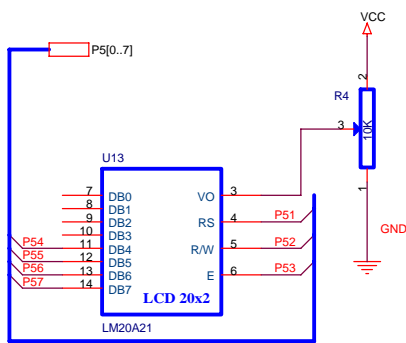


<b>P6.X Freie Anwendung</b>		
P5.1 bis P5.7 LCD		
P7.7 Tastaturdecoder - D		
P7.6 Tastaturdecoder - C		
P7.5 Tastaturdecoder - B		
P7.4 Tastaturdecoder - A		
P1.0 INT3 Temp. I2C		
P1.1 INT4 TEMP - SPI (old)		
P1.2 free		
P1.3 free		
P1.4 INT2 IIC-RTC Sekundentakt		
P1.5 SHT11 DATA		
P1.6 SHT11 SCKL		
P1.7 T2 Licht Frequenz Umsetzer		
P3.2 INT0 P32 Tastatur		
P3.3 INT1 P33 Sekundentakt		
P3.4 T0 P34 SDA		
P3.5 T1 P35 SCL		
P5.0 1 bit - Bus Temperatursensor		
POTI R9 Kanal 0		
POTI R7 Kanal 9		
NTC R8 Kanal 8		

## Luftfeuchte/Temperatursensor

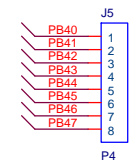


Title			<b>MC-System 2004</b>	
Size	Document Number			Rev
A3	CAMPUS02 FH-AT / Heseg Dr. Humer / BULME GRAZ			2.0
Date:	Sunday, March 13, 2005	Sheet	1	of 5

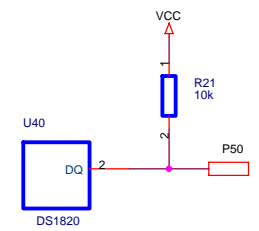


**Alphanumeric Display**

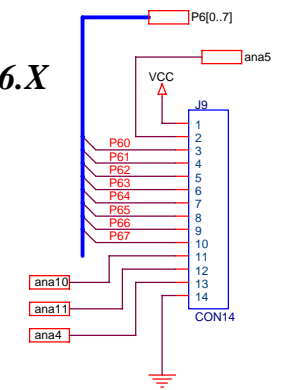
**PWM-Out**



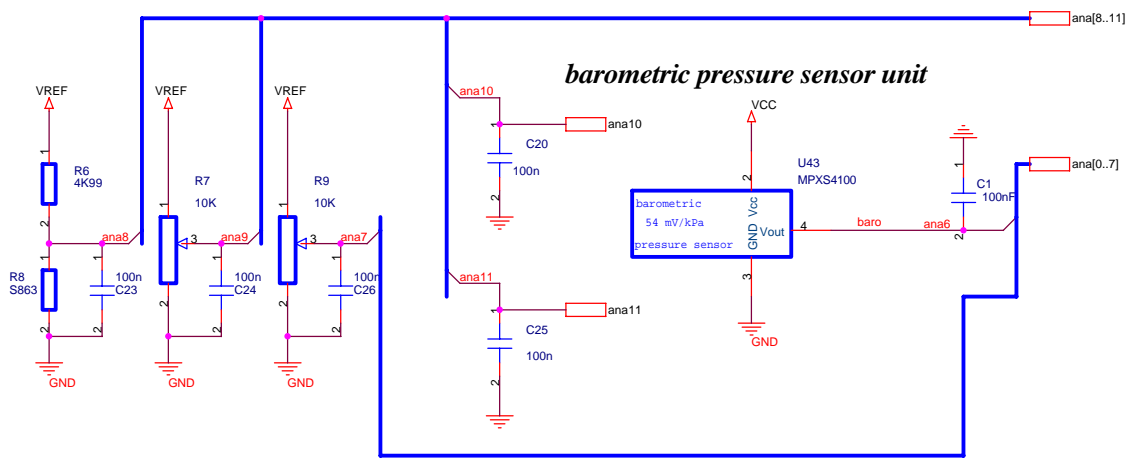
**Temperatursensor (1bit-Bus)**



**P6.X**

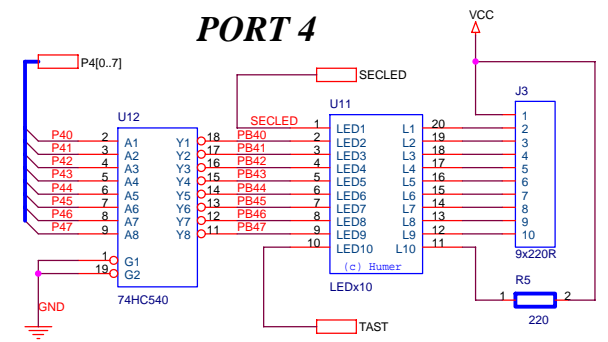


**AD-Unit**



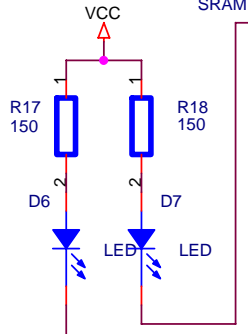
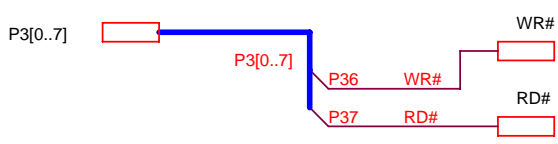
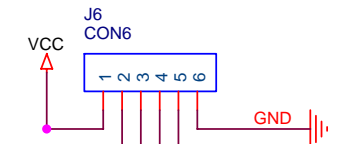
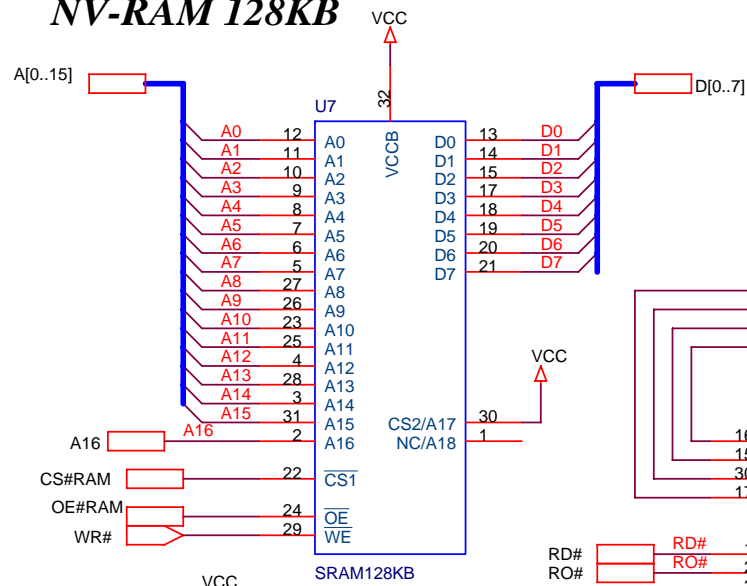
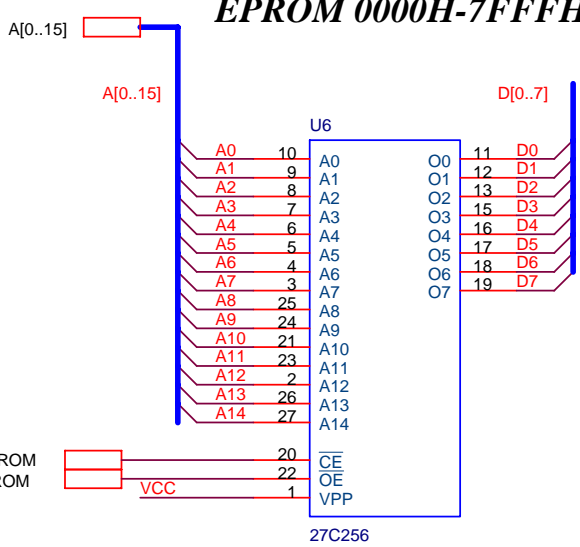
**barometric pressure sensor unit**

**PORT 4**

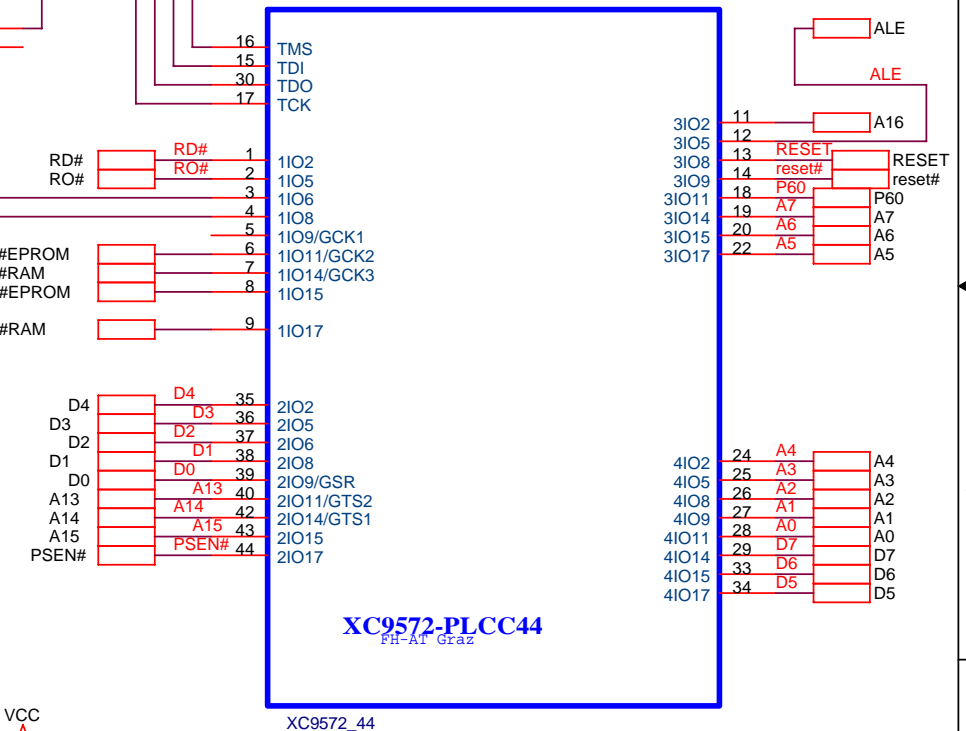
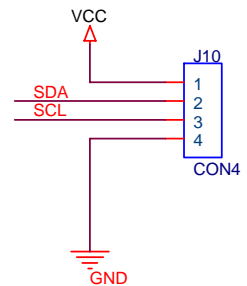
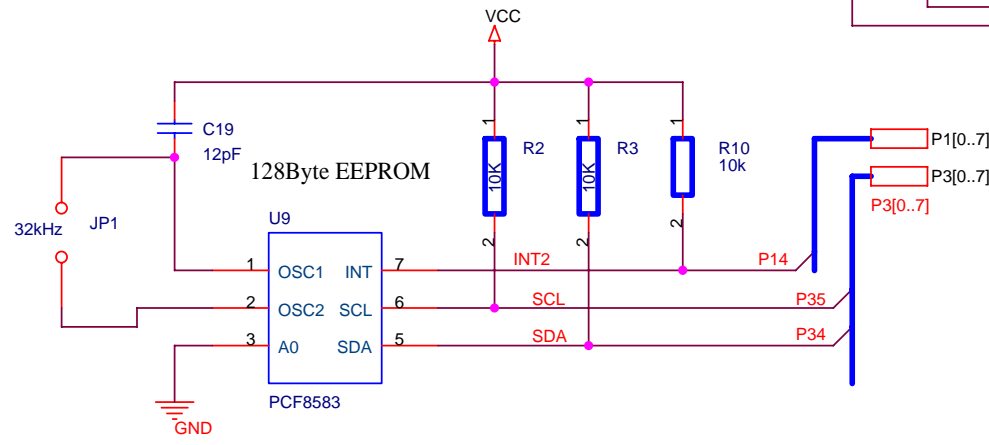


Title			<b>MC-System 517 - IN/OUT</b>
Size	Document Number		
A3	CAMPUS02 / Dr. Humer		
Date:	Sunday, March 13, 2005	Sheet	2 of 5

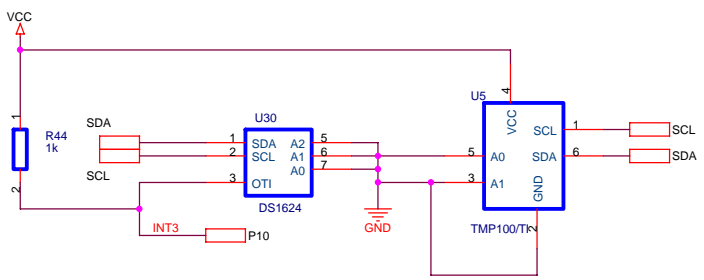
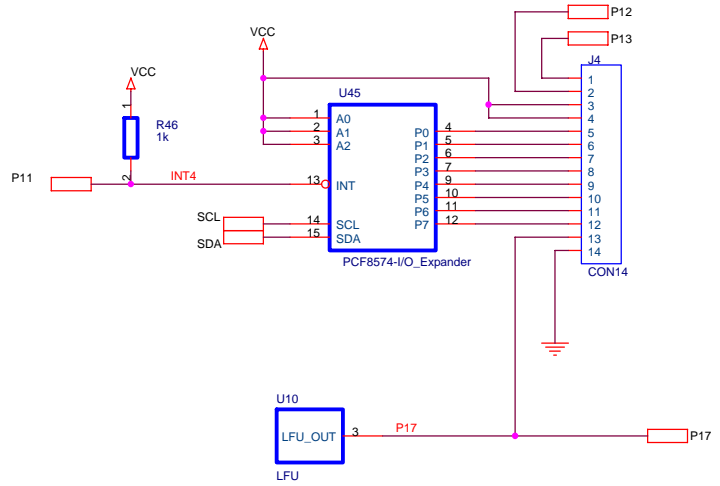
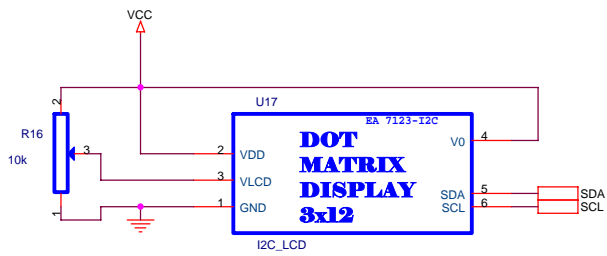
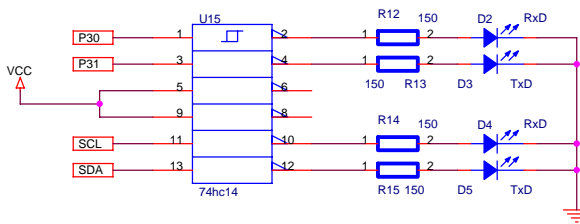
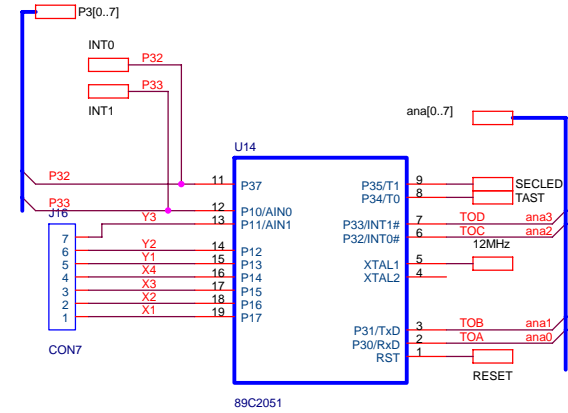
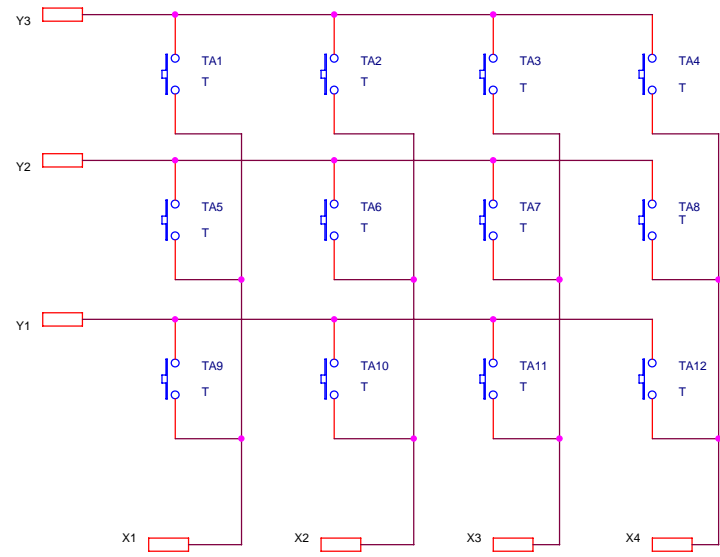
**EPROM 0000H-7FFFH NV-RAM 128KB**



**I2C - RTC**

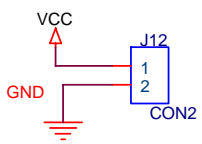
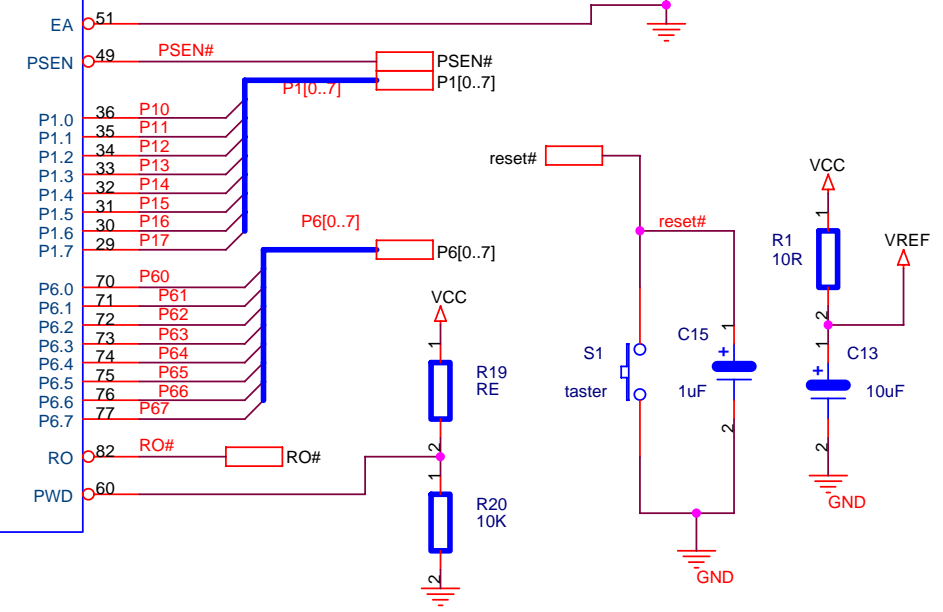
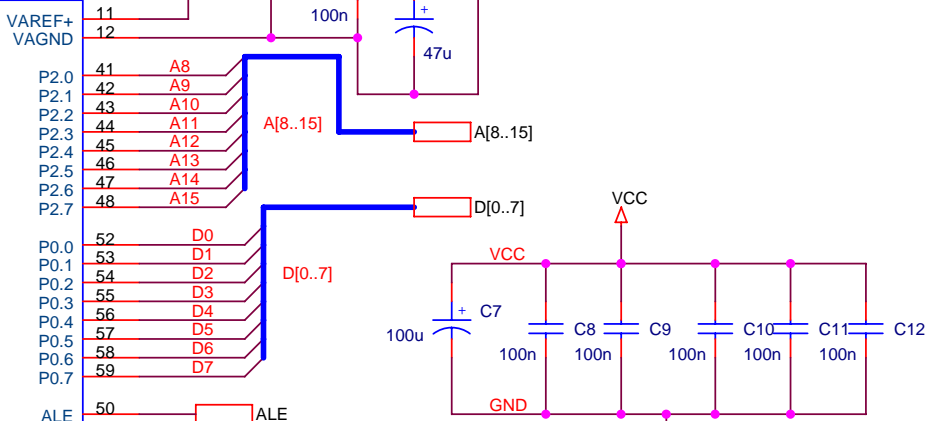
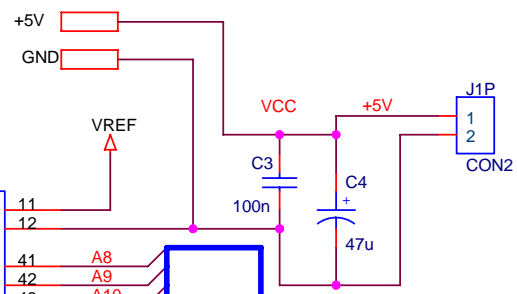
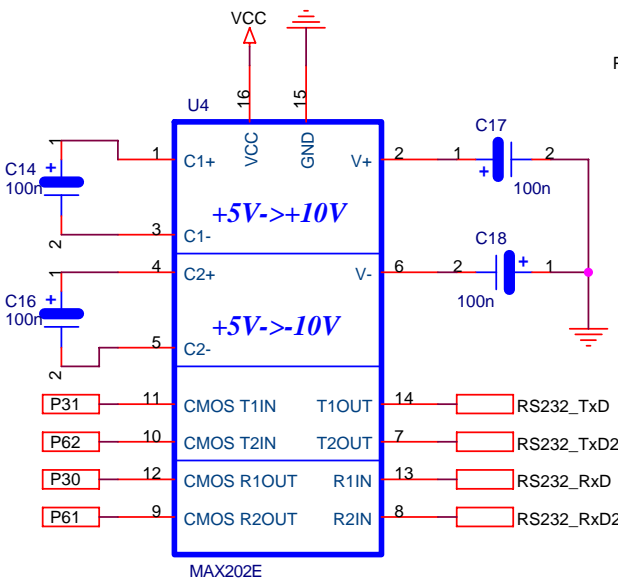
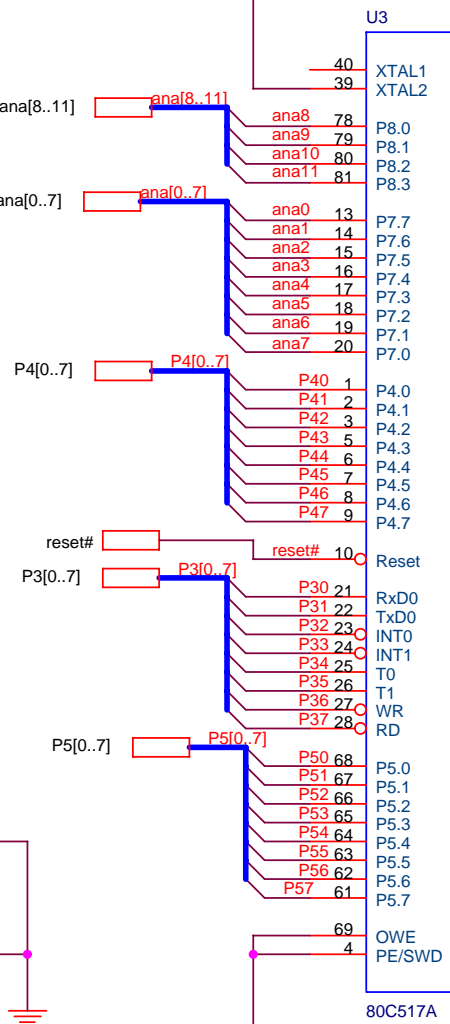
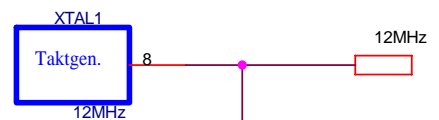
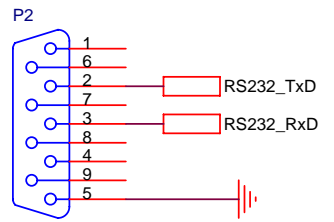
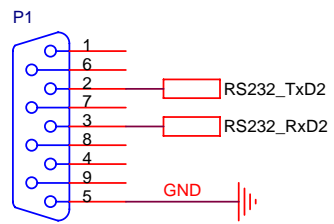


Title		
<b>MC-System 517 - Memory</b>		
Size	Document Number	Rev
A4	<b>CAMPUS02 / Dr. Humer</b>	1.0
Date:	Sunday, March 13, 2005	Sheet 3 of 5



**I2C-Temperatursensor**

Title		
<b>MC-System 517 - Tasten</b>		
Size	Document Number	Rev
A3	<b>CAMPUS02 / Dr. Humer</b>	1.0
Date:	Sunday, March 13, 2005	Sheet 4 of 5



Title			<b>MC-System 517 - Kernel</b>		
Size	Document Number	Rev			
A4	<b>CAMPUS02 / Dr. Josef Humer</b>	1.0			
Date:	Sunday, March 13, 2005	Sheet	5	of	5